

Warning:

Proper use of the CS-301.s1 depends on careful reading of all instructions including the **waveguard connect caps** descriptions and labels that come with or on the devices. Inaccurate measurements may be caused by incorrect use of the device. Non-compliance with warnings and safety regulations may result in severe personal injury and total loss of equipment.

Disclaimer: We have attempted to write this document as accurately as possible. However, mistakes are bound to occur, and we reserve the right to make changes to the products, which may render parts of this document invalid. No part of this document may be copied or reproduced without the explicit permission of the authors.

Datasheet

Product Name: waveguard connect cap, 21 channels, 10/20, unshielded, DB25

Product Code: CS-301.s1

Product Version: 6

waveguard™ connect

Manufacturer:

eemagine Medical Imaging Solutions
Gubener Str. 47
10243 Berlin
Germany

Phone +49 (0)30 2904 8404
Fax +49 (0)30 2904 8405
E-Mail support@eemagine.com
Web www.eemagine.com

**OQC passed**

for part(s) with SERIAL number as indicated on product

Classification: CE class I

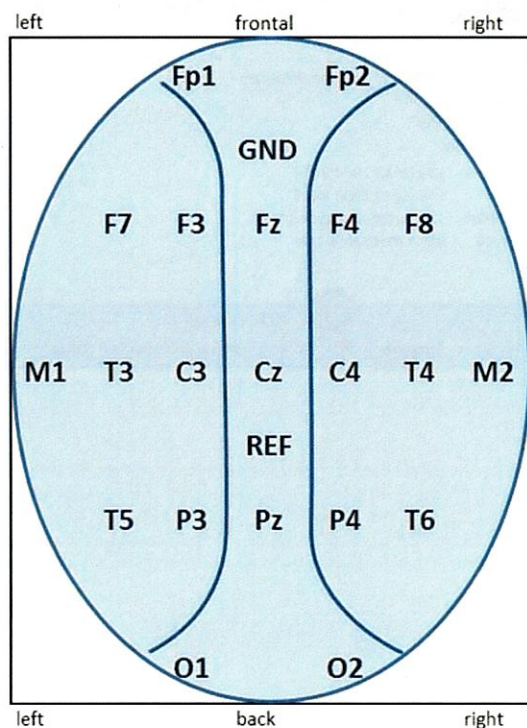
Compatibility: Touch proof adapter [XC-301] is compatible with CS-301.

Description: waveguard EEG cap, 21 electrodes plus GND + REF, reference position at CPz, layout 10/20, Tin electrode, 1x DB25 Male connector, unshielded cable 1.5 m.

Available sizes: s1: 06 = Baby, 07 = Infant, 08 = Child, 09 = Small, 10 = Medium, 11 = Large

Specification

Cap Layout:



Pinning:

Channel Number	Electrode	Pin numbers
1	Fp1	1
2	Fp2	14
3	F3	2
4	F4	15
5	C3	3
6	C4	16
7	P3	4
8	P4	17
9	O1	5
10	O2	18
11	F7	6
12	F8	19
13	T3	7
14	T4	20
15	T5	8
16	T6	21
-	GND	9
17	Cz	22
18	Fz	10
19	Pz	23
20	M1	11
21	M2	24
-	-	12
-	-	25
22	REF	13

Notes	
GND	GND is located at AFz position, labeled GND.
REF	Reference is located at CPz position, labeled REF.
Cabeling	
Cable length	1.5m
Cable	unshielded
Connector	
Connector type	DB 25
Connector gender	Male